



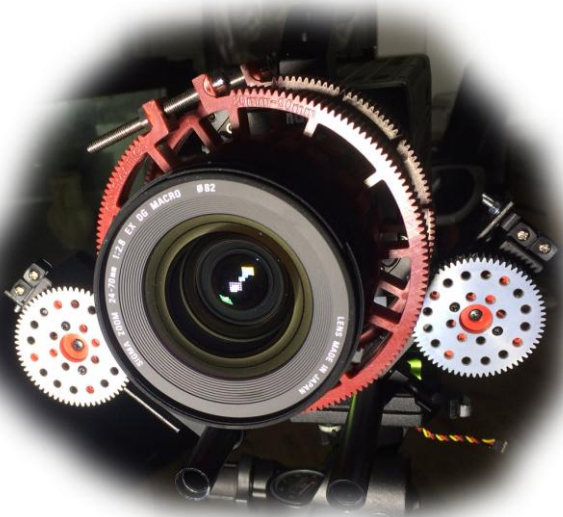
## GERBIL Lens Controller

Pixoft® Diagnostic Imaging Limited are pleased to present the GERBIL Lens Controller.

The Gerbil Lens Controller is a useful tool to enable the control of camera lens Focus, Zoom and Aperture for situations where the camera needs to be remote from the operator.

The system comes complete with :

- Lens rail for mounting the gears
- Gear Motors for Focus and Zoom
- Lens Gear rings
- *Optional* Gear Motor for IRIS control
- Control Unit
- Power Supply
- Windows Control Software

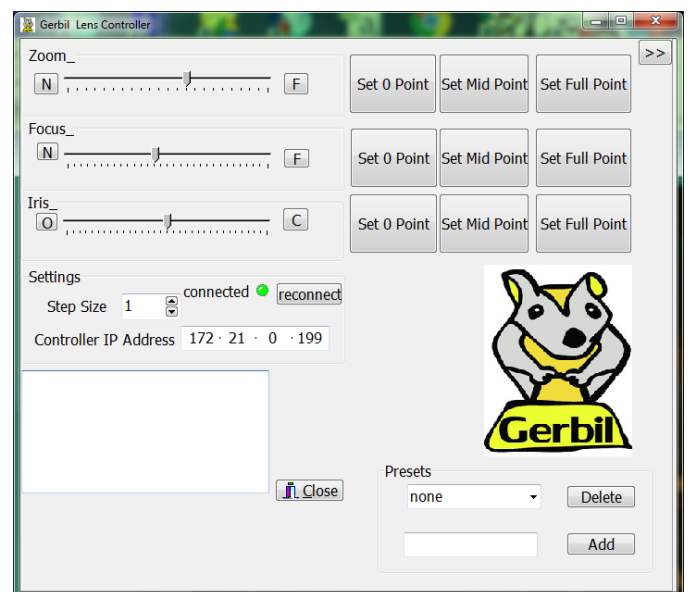


The system uses servos for lens control from a simple software application via Ethernet.

You can program pre-set positions for the zoom, Focus and Aperture for quick recall.

The systems has many application including:

- Automotive testing (gantry and Pit cameras).
- Military Range Cameras
- Wildlife Photography



A simple and effective solution to remote lens control.

[www.pixoft.co.uk](http://www.pixoft.co.uk)

For more information please contact Pixoft Diagnostic Imaging Limited or you local NAC Image Technology Inc representative.

**Pixoft Diagnostic Imaging Limited**

2 Fore Street, Teignmouth, Devon, TQ14 8DZ,  
United Kingdom

+44 (0)1626 437 557 • [info@pixoft.co.uk](mailto:info@pixoft.co.uk) • [www.pixoft.co.uk](http://www.pixoft.co.uk)